



Centre de recherche sur les politiques en matière d'invalidité professionnelle (CRPIP)
Centre for Research on Work Disability Policy (CRWDP)

Centre for Research on Work Disability Policy

Mission, Structure and Key Activities

Emile Tompa
Senior Scientist, IWH
Associate Professor,
McMaster University
Co-director, CRWDP

Ellen MacEachen
Associate Professor,
University of Waterloo
Senior Scientist, IWH
Co-director, CRWDP





Centre de recherche sur les politiques en matière d'invalidité professionnelle (CRPIP)
Centre for Research on Work Disability Policy (CRWDP)

Who We Are

Centre for Research on Work Disability Policy

- In 2012, the Centre for Research on Work Disability Policy (CRWDP) was created through a 7-year **SSHRC Partnership Grant** following a 2 year development period
- We are a national collaborative of 60+ researchers and 60+ partners across 15 research institutions. We are dedicated to addressing issues related to Canada's work disability policy system





Centre de recherche sur les politiques en matière d'invalidité professionnelle (CRPIP)
Centre for Research on Work Disability Policy (CRWDP)

Our Mission

We are a transdisciplinary initiative on the future of work disability policy in Canada

Our mission is to conduct **partner-informed research** on how to improve Canadian work disability policy to help all people access employment and income security



Centre de recherche sur les politiques en matière d'invalidité professionnelle (CRPIP)
Centre for Research on Work Disability Policy (CRWDP)

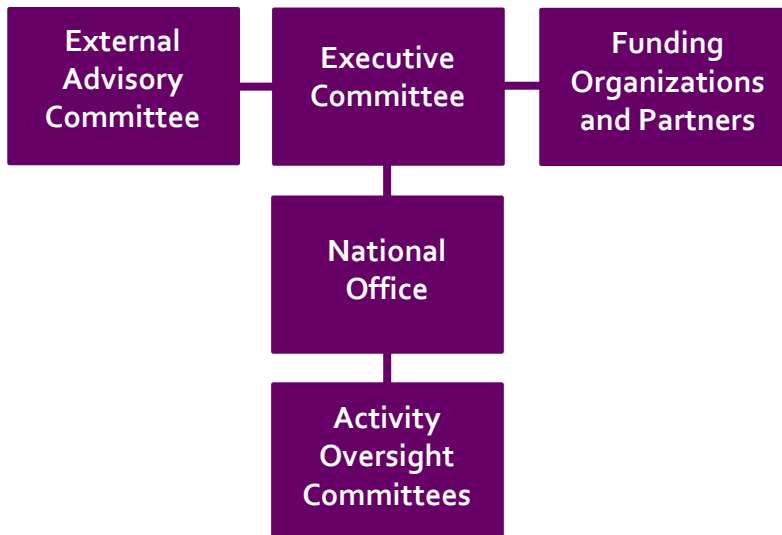
CRWDP Core Mandate

- **Bring together varied stakeholders** in the Canadian work disability policy system, including employers
- **Identify issues associated with program coordination and complexity**
- **Facilitate dialogue**, problem identification, and policy action
- Support multiple transdisciplinary research projects, including international comparative work

- **Build capacity for research on applied work disability policy**
- **Build consensus on a roadmap for work disability policy**



Overview of How We are Organized



External Advisory Committee

- Arms length advice

Executive Committee

- Centre oversight

Provincial Cluster Leads

- Provincial coordination

Thematic Leads

- Cross national thematic coordination

Focussed Committees

- Knowledge Mobilization
- Partner Engagement
- Seed Grants
- Student Capacity Building



Centre de recherche sur les politiques en matière d'invalidité professionnelle (CRPIP)
Centre for Research on Work Disability Policy (CRWDP)

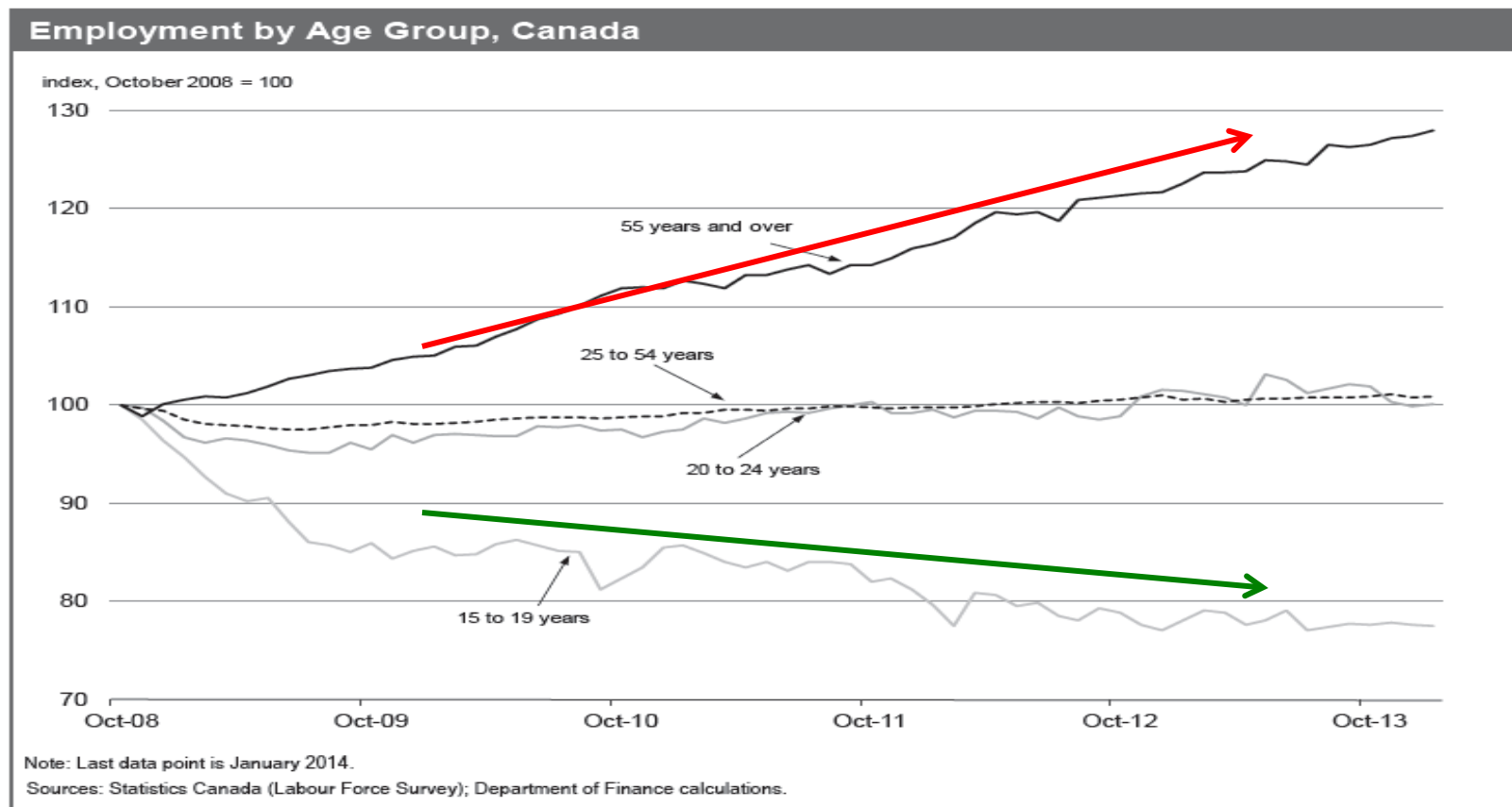
Work Disability Policy Issues and Context

- Complex Canadian work disability policy system consisting of multiple programs at the provincial and federal level
- Changing nature of work, workers and injuries posing new challenges
- Economic climate can create pressure to further restrict eligibility





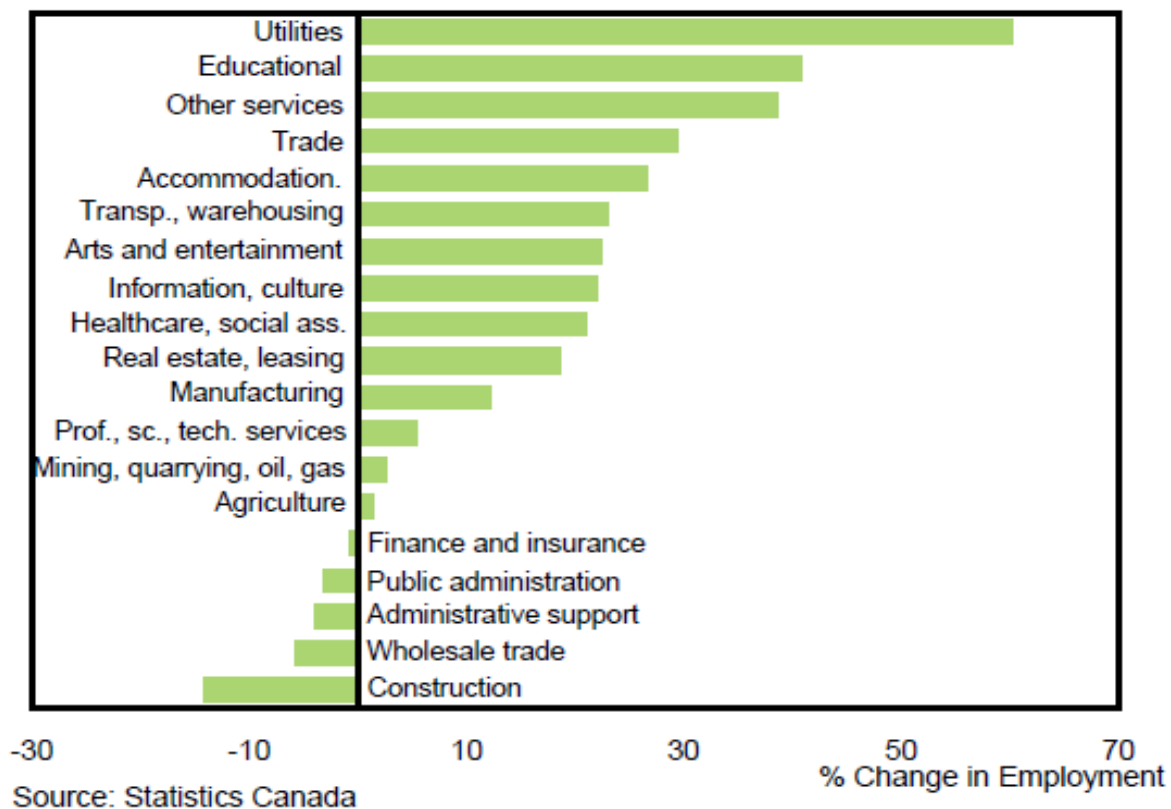
Changing Nature of Workers, Work, Injuries



Source: Department of Finance Canada (2014). Jobs Report: The State of the Canadian Labour Market. Ottawa, Department of Finance, Canada.

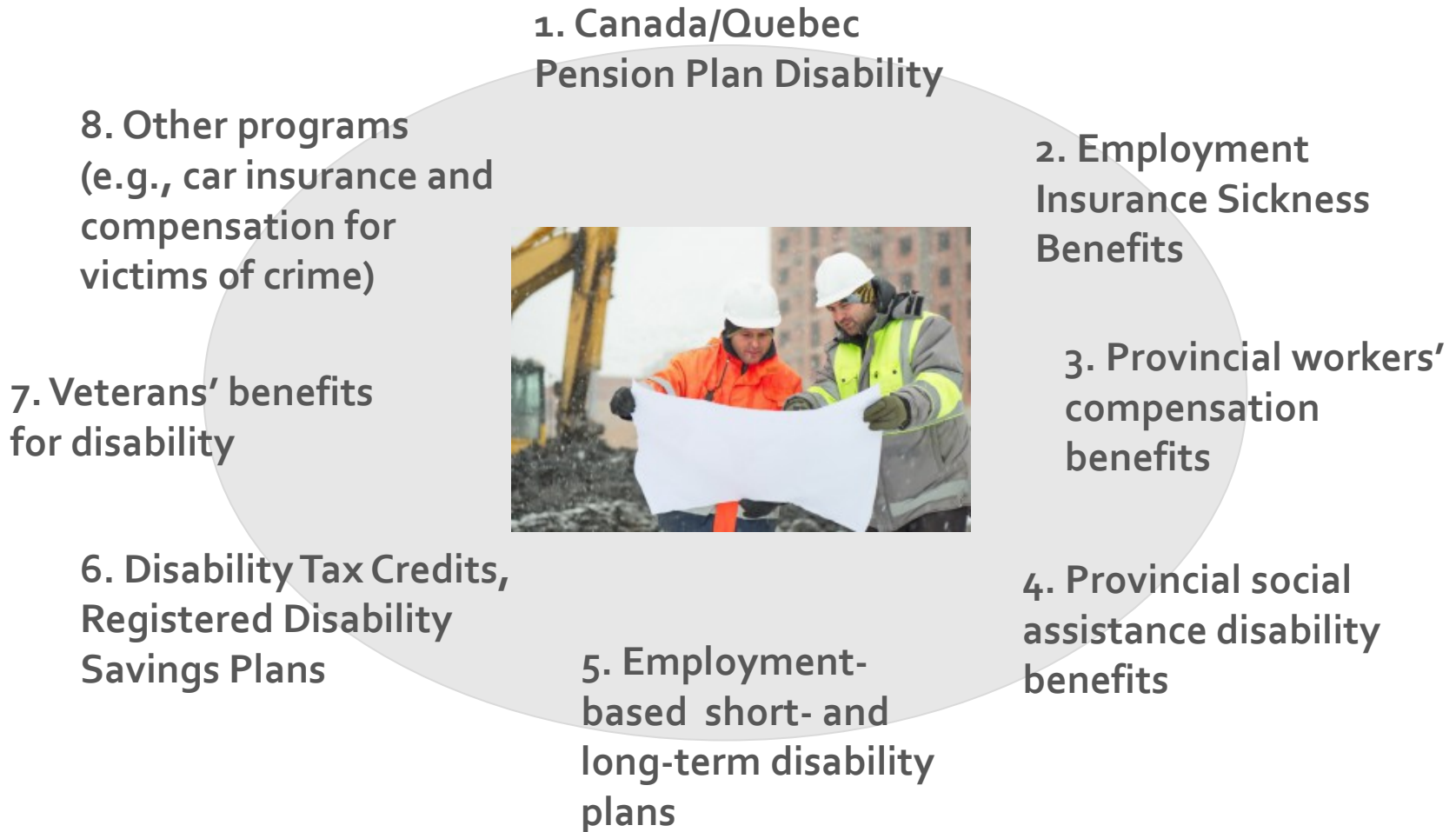


CHART 11: CHANGE IN TEMPORARY AND CONTRACT WORKERS BY INDUSTRY (1997-2013)



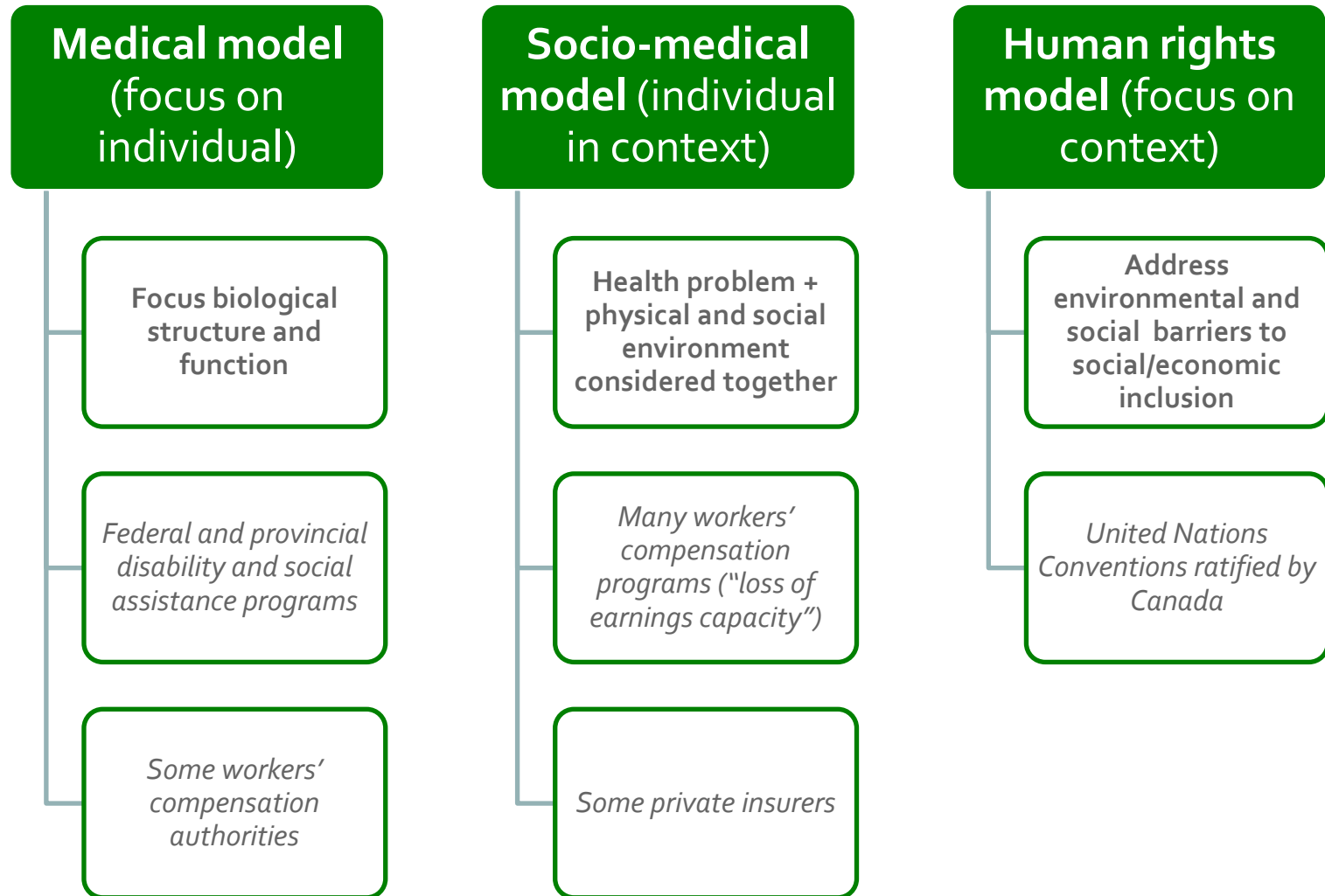


Patchwork of Canadian Work Disability Programs





Varied Disability Concepts Across Canadian Programs





Social and Organisational Silos

Work injury system

Work injury & illness
Researchers
Workers' comp policy-makers
Injured worker activists
Overall medical &
socio-legal frame

Social security policy system

Disability researchers
Social security policymakers
Disability rights activist
Overall human rights &
medical model frame



Centre de recherche sur les politiques en matière d'invalidité professionnelle (CRPIP)
Centre for Research on Work Disability Policy (CRWDP)

Our Population Health Focus

Work disability touches most people at some point over their lifetime

- Work disability policy is not a fringe concern
- People with disabilities represent about 15.5 per cent of Ontario's population (similar percentages apply across the country)
- More than 50% of Canadian families touched by disability
- Aging of the Canadian population means more working age adults will be affected by chronic and episodic health conditions



CRWDP's Overall Objective and Research Questions

To identify how people, when disabled, can be better retained and integrated into the Canadian labour market

Research questions

1. How well does the Canadian disability policy system serve the current and emerging needs of working-age individuals, when disabled, in terms of employment support and opportunities?
2. For what individuals and labour-market contexts does it work well/not work well and why?
3. What are the key opportunities for policy and program improvement in the short and long run?





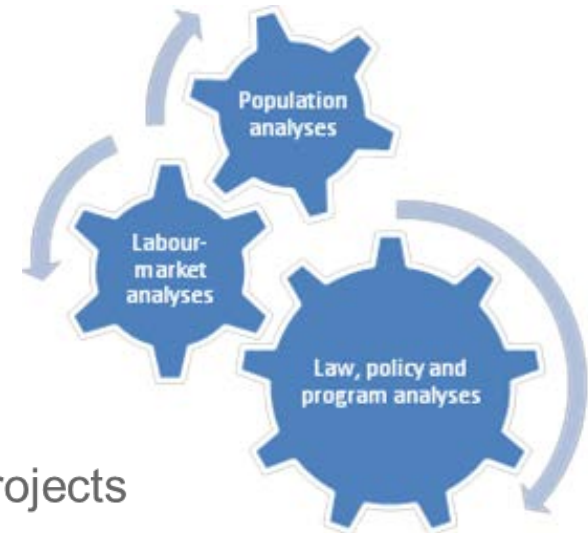
Research Activity Plan

Three research themes

1. Population analyses
2. Labour-market analyses
3. Law, policy and program analyses

Highlights

- Requirement of partner involvement in all projects
- Emphasis on transdisciplinary methods
- Funding four large national studies
- Seed funding for other studies to assist with grant development
- Substantial student support at the doctoral and post-doctoral levels





Centre de recherche sur les politiques en matière d'invalidité professionnelle (CRPIP)
Centre for Research on Work Disability Policy (CRWDP)

CRWDP Research Studies

Groundwork

Environmental Scan of Past Policy Initiatives Addressing Canadian Work Disability Policy System Coordination Issues

- Identified and described past policy efforts (initiatives) to address coordination of disability income support programs in Canada
- Created database describing each initiative with related documents
- Provides important lessons going forward

Scoping Review of Work Disability Policy

- Created an accessible database of 751 scientific articles about work disability policy
- International in scope, current (published 2000 or later), and organised by government program type